

Campus Portal Login:

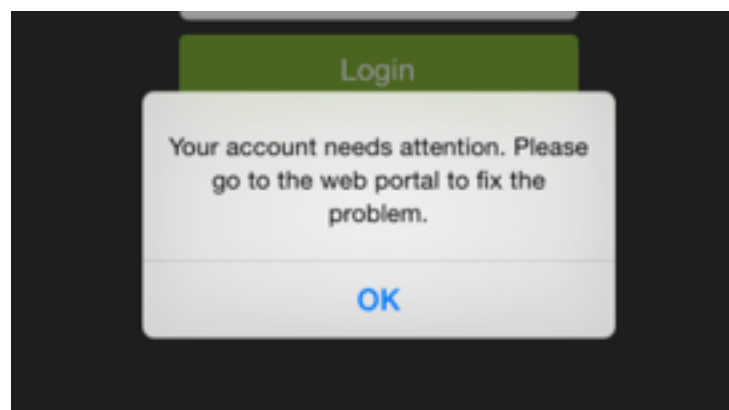
District Code: bbptlg

Username: student ID#

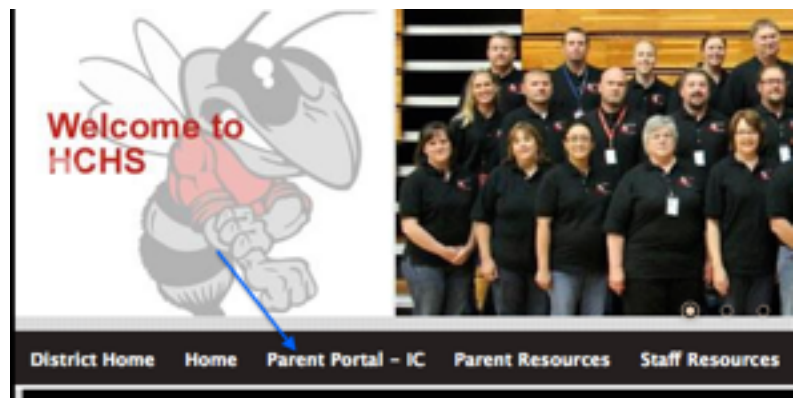
Password: first initial last initial (both lowercase) birth month day year
(2 digits each)

Example: jd051493

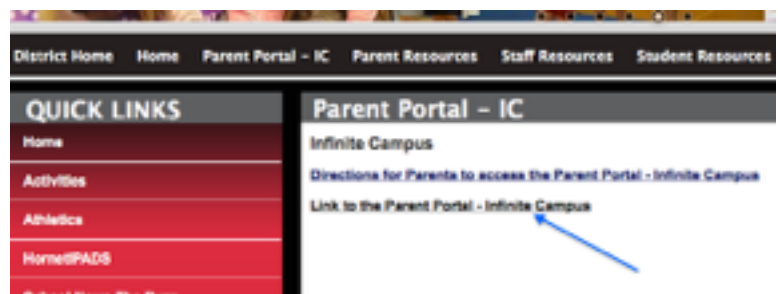
What to do if Campus Portal directs you to the web portal:



Go to the school website:
Click "Parent Portal-IC"



Click "Link to Parent Portal Infinite Campus"



Log into IC with your Campus Portal login credentials



The image shows the Infinite Campus login page. It features a green header with the 'Infinite Campus' logo. Below the header, there is a white box containing a 'Username' field, a 'Password' field, and a 'Sign In >>' button. A horizontal line is visible at the bottom of the white box.

Enter your login credentials again as well as the Captcha



The image shows the Infinite Campus login page with a Captcha. The header is green and contains the 'Infinite Campus' logo on the left and the tagline 'Transforming K12' on the right. The main content area is white and contains a 'Username' field, a 'Password' field, and a Captcha image. The Captcha image displays the characters 'o c q q N | x' on a colorful background. To the right of the Captcha image, there is a text box that reads: 'In addition to entering your username and password, please enter the letters and numbers shown. Do not enter spaces. Letters shown are case sensitive.' Below the Captcha image and text box is a 'Sign In >>' button. A horizontal line is visible at the bottom of the white box.

After you have successfully logged into IC Parent Portal you will be able to log into the Campus Portal app